

PART OF THE SOUTH 1/2, OF SEC. 22, T.7N., R.1E., S.L.B. & M.

WOLF CREEK VILLAGE II-PHASE 2  
TIMESHARE CONDOMINIUM

TAXING UNIT: 203

WEBER COUNTY  
SCALE 1" = 30'

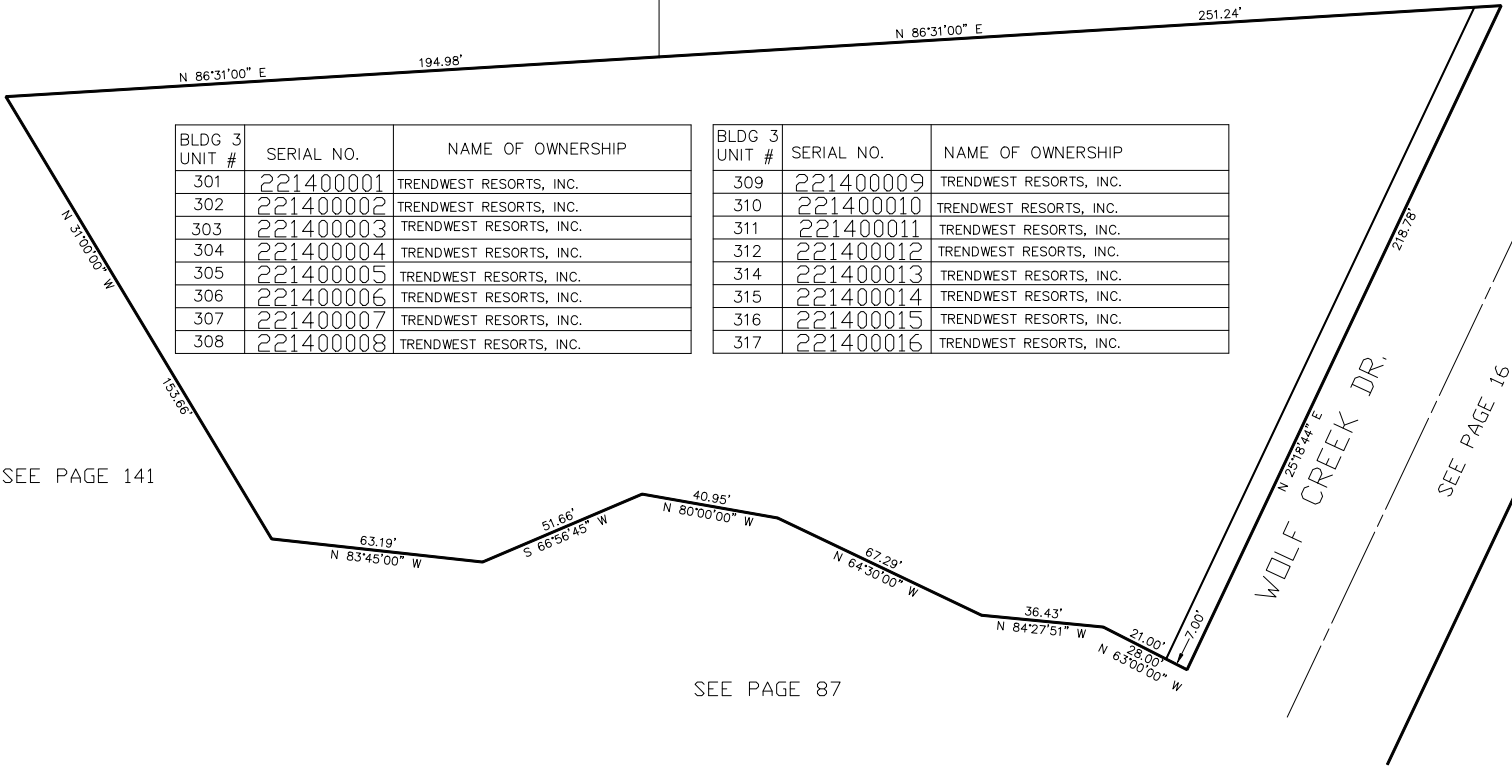
OMITTED

03-DEC-1998

SEE PAGE 16

SEE PAGE 16

CENTER OF SEC. 22



BLDG 3 UNIT #	SERIAL NO.	NAME OF OWNERSHIP
301	221400001	TRENDWEST RESORTS, INC.
302	221400002	TRENDWEST RESORTS, INC.
303	221400003	TRENDWEST RESORTS, INC.
304	221400004	TRENDWEST RESORTS, INC.
305	221400005	TRENDWEST RESORTS, INC.
306	221400006	TRENDWEST RESORTS, INC.
307	221400007	TRENDWEST RESORTS, INC.
308	221400008	TRENDWEST RESORTS, INC.

BLDG 3 UNIT #	SERIAL NO.	NAME OF OWNERSHIP
309	221400009	TRENDWEST RESORTS, INC.
310	221400010	TRENDWEST RESORTS, INC.
311	221400011	TRENDWEST RESORTS, INC.
312	221400012	TRENDWEST RESORTS, INC.
314	221400013	TRENDWEST RESORTS, INC.
315	221400014	TRENDWEST RESORTS, INC.
316	221400015	TRENDWEST RESORTS, INC.
317	221400016	TRENDWEST RESORTS, INC.

SEE PAGE 141

SEE PAGE 87

SEE PAGE 16

FOR COMPLETE ENG DATA SEE ORIGINAL DEDICATION PLAT IN BOOK 46, PAGE 50 OF RECORDS.